



FLEX-WELD
A DIVISION OF KELCO

HUNDREDS OF PRODUCTS. THOUSANDS OF APPLICATIONS. ONE GOAL: **TOTAL CUSTOMER SATISFACTION.**

INDUSTRIES SERVED:



HVAC



INDUSTRIAL



OIL & GAS



AUTOMOTIVE



WATER RECLAMATION



RENEWABLE ENERGY



CONSTRUCTION



AEROSPACE



AGRICULTURE



MARINE



TRANSPORTATION

CHEMICAL PROCESSING

Precision Engineered Flexible Metal Components For HVAC and Construction

For over 100 years, Flex-Weld, a division of KELCO, has been a leader in the design and fabrication of flexible metal bellows, expansion joints, expansion compensators, metal hose assemblies, expansion loops, and other engineered components. We also offer Delegated Services which includes: Design Layout, Material Certifications, Design Calculations, and Formal Submittals. Our products are manufactured in the USA at our facility in Woodstock, IL and are found in hundreds of applications across a wide range of industries.



Expansion Compensators: Quadra Side (7Q Series)

- Top performing compensator in the industry
- Square, anti-torque design
- 3/4" to 4" sizes
- Variety of end fittings available



Braided Hose Assemblies: Gold & Silver Series

- Stainless steel and bronze assemblies
- Standard or custom lengths available
- Variety of end fittings available
- Reduced diameter configurations



Expansion Loops: Ke-loop L, U, & V

- Compensates for movement in all 3 planes
- Stainless steel and bronze assemblies
- Integral hanger bracket and drain available
- Pipelines can be nested
- Seismic protection of piping



Rubber Expansion Joints

- Available in sphere type or wide-arch
- Single, twin or reducing configurations
- Noise reducing & easy to install
- Neoprene/EPDM standard materials
- Other materials available



Externally Pressurized Expansion Joints (EPEJ)

- 150# & 300# pressure designs
- Optimal for steam service
- Maintenance-free: ready for direct encasement
- Up to 16" of axial movement
- Variety of sizes & end fittings available



Internally Pressurized Expansion Joints: 308 & 311 Series

- 150# & 300# pressure designs
- Available with liners, shrouds, and tie rods
- Available in 100% stainless steel, if required
- Tie rods or anchor base is standard on dual units



Bellows-Type Pump Connector

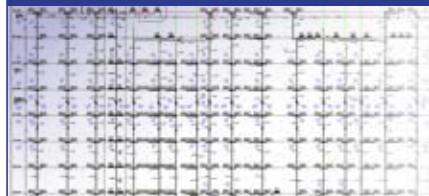
- 150# & 300# pressure designs
- Reduces stress on mechanical equipment in the system
- More plies than any other connector
- Available in 100% stainless steel, if required



General Purpose/Exhaust Assembly: 10MC, 30MC, 1207, 1407 Series

- Single & multi-ply designs available
- ABS Certification available
- Superior resistance to vibration and corrosion
- Designed for low pressure applications
- Up to 42" diameter available on some series

Delegated Design Services: Keflex Professional Design Review



- Design layout, stress analysis, calculations, and submittal
- In accordance with ASME B31
- Stamped by licensed professional engineer
- Product selection



4 DIVISIONS
1 MISSION



KelcoInd.com

KelcoInd.com/contact-us/request-a-quote/
or CustomerService@KelcoInd.com

Illinois:
1425 Lake Avenue
Woodstock, IL 60098
Office: 815-334-3600
Fax: 815-337-0377

Indiana:
P.O. Box 657 • 700 W. Swager Dr.
Fremont, IN 46737
Office: 260-495-9866
Fax: 260-495-5388