



HVAC Products

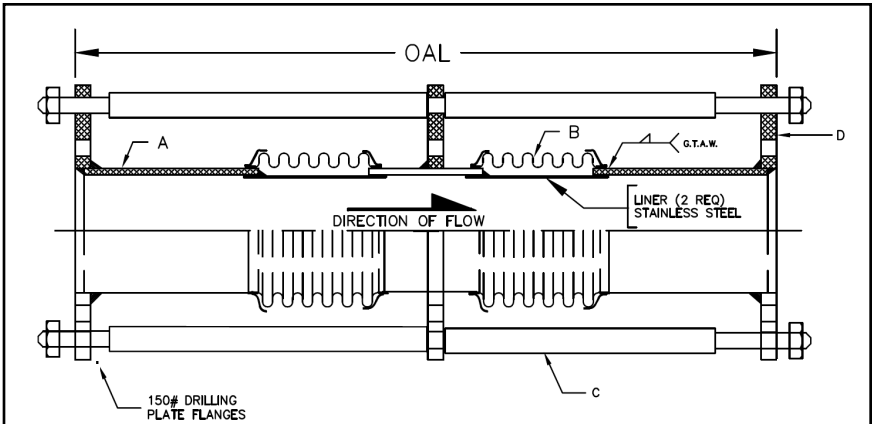
SUBMITTAL

Mar 2018

308 SERIES DUAL EXPANSION JOINT 8" TRAVEL W/150# PLATE FLANGES & TIE RODS

PROJECT:	
CUSTOMER:	
ENGINEER:	
ARCHITECT:	

MATERIALS OF CONSTRUCTION	
'A' PIPE SCH 40:	CARBON STEEL
'B' CAPSULE:	T-304 STN STL
'C' TIE RODS/SPACERS:	CARBON STEEL
'D' PLATE FLANGES:	CARBON STEEL



AXIAL MOVEMENT RATED AT 6.4" AND 1.6" EXTENSION

DESIGN PRESSURE = 50 PSIG @ 70°F FOR 4" AND 5"
DESIGN PRESSURE = 150 PSIG @ 70°F FOR 6" - 12"

QTY	ID # OR TAG #	DIA (IN)	KEFLEX PART #	OAL	AXIAL FORCE TO COMPRESS (LBS)	WEIGHT (LBS)	3D Model (.stp)
		4"	F040L308DT1508	40"	625	105	
		5"	F050L308DT1508	40"	425	121	
		6"	F060M308DT1508	40"	500	139	
		8"	F080M308DT1508	40"	650	176	
		10"	F100M308DT1508	40"	900	224	
		12"	F120M308DT1508	40"	550	294	

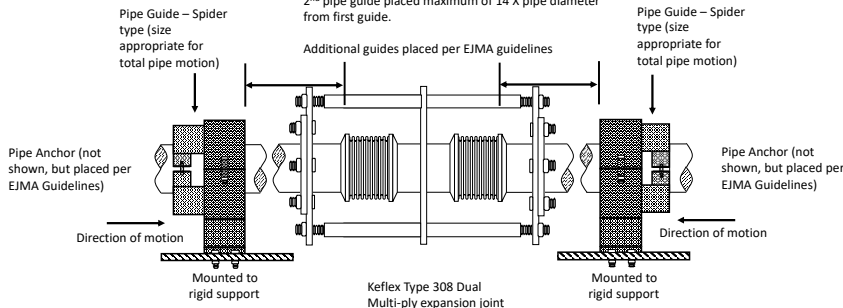
Typical Installation

1st Pipe Guide (and anchor) placed a maximum distance of 4 X pipe diameter from expansion joint.

2nd pipe guide placed maximum of 14 X pipe diameter from first guide.

Additional guides placed per EJMA guidelines

Pipe Guide – Spider type (size appropriate for total pipe motion)



IMPORTANT LINKS

BROCHURE:	
INSTALLATION INSTRUCTIONS:	
TECHNICAL DATA:	
WEBSITE:	KELCOIND.COM



MADE IN THE USA

**1425 LAKE AVE
WOODSTOCK, IL 60098
815-334-3600**