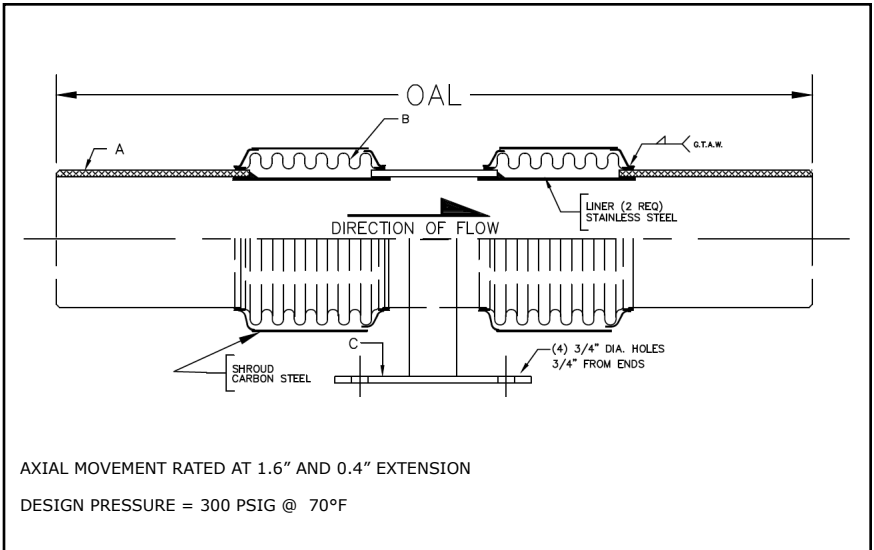


311 SERIES DUAL EXPANSION JOINT 2" TRAVEL W/WELD ENDS - HIGH PRESSURE

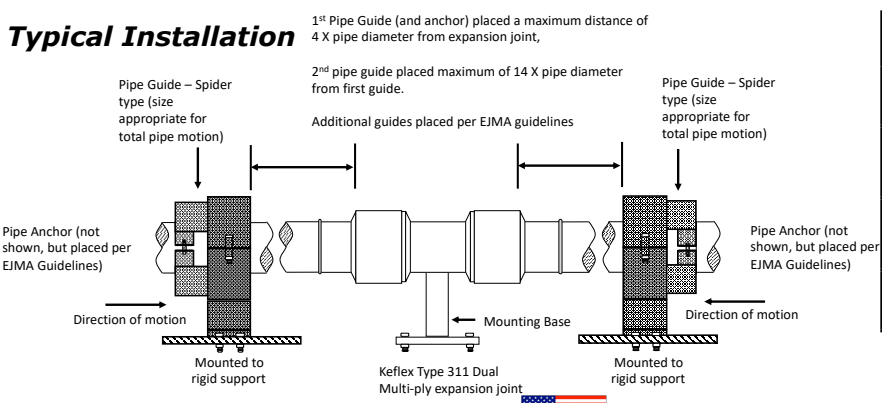
PROJECT:	
CUSTOMER:	
ENGINEER:	
ARCHITECT:	

MATERIALS OF CONSTRUCTION	
'A' PIPE SCH 40:	CARBON STEEL
'B' CAPSULE:	T-304 STN STL
'C' BASE PLATE:	CARBON STEEL
'D' PLATE FLANGES:	CARBON STEEL



QTY	ID # OR TAG #	DIA (IN)	KEFLEX PART #	OAL	AXIAL FORCE TO COMPRESS (LBS)	WEIGHT (LBS)	3D Model (.stp)
		2"	F020H311DB902	25"	100	17	
		2 1/2"	F024H311DB902	25"	200	18	
		3"	F030H311DB902	25"	150	34	
		4"	F040H311DB902	25"	400	49	
		5"	F050H311DB902	25"	225	61	
		6"	F060H311DB902	25"	250	73	
		8"	F080H311DB902	25"	400	94	
		10"	F100H311DB902	25"	600	120	
		12"	F120H311DB902	25"	350	159	

Typical Installation



IMPORTANT LINKS	
BROCHURE:	
INSTALLATION INSTRUCTIONS:	
TECHNICAL DATA:	
WEBSITE:	KELCOIND.COM

MADE IN THE USA

**1425 LAKE AVE
WOODSTOCK, IL 60098
815-334-3600**