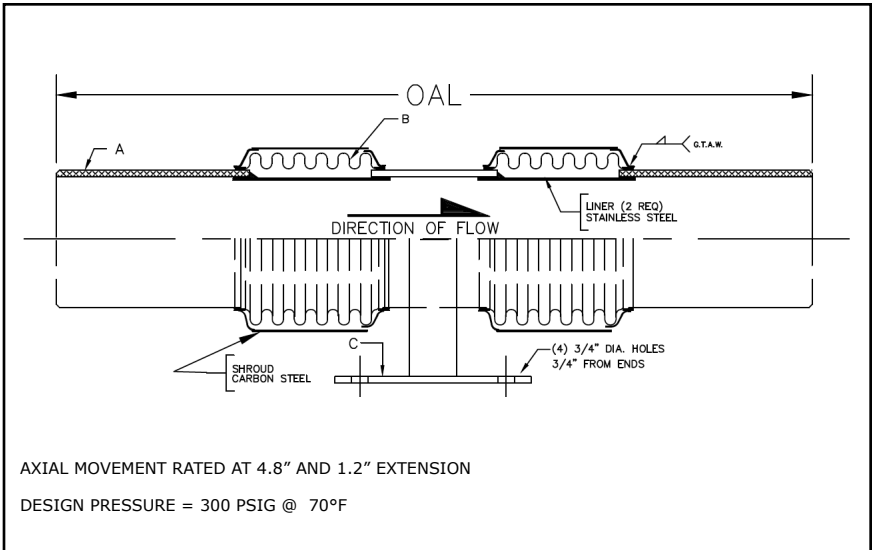





**311 SERIES DUAL EXPANSION JOINT 6" TRAVEL W/WELD ENDS - HIGH PRESSURE**

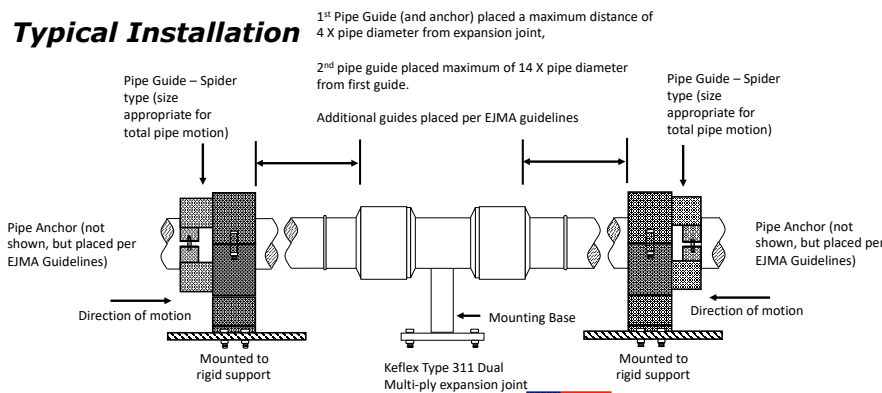
<b>PROJECT:</b>	
<b>CUSTOMER:</b>	
<b>ENGINEER:</b>	
<b>ARCHITECT:</b>	




<b>MATERIALS OF CONSTRUCTION</b>	
'A' PIPE SCH 40:	CARBON STEEL
'B' CAPSULE:	T-304 STN STL
'C' BASE PLATE:	CARBON STEEL
'D' PLATE FLANGES:	CARBON STEEL



QTY	ID # OR TAG #	DIA (IN)	KEFLEX PART #	OAL	AXIAL FORCE TO COMPRESS (LBS)	WEIGHT (LBS)	3D Model (.stp)
		8"	F080H311DB906	36"	750	127	
		10"	F100H311DB906	36"	1000	157	
		12"	F120H311DB906	36"	600	208	

**Typical Installation**



<b>IMPORTANT LINKS</b>	
BROCHURE:	
INSTALLATION INSTRUCTIONS:	
TECHNICAL DATA:	
WEBSITE:	<a href="http://KELCOIND.COM">KELCOIND.COM</a>

 **MADE IN THE USA**

**1425 LAKE AVE  
WOODSTOCK, IL 60098  
815-334-3600**