



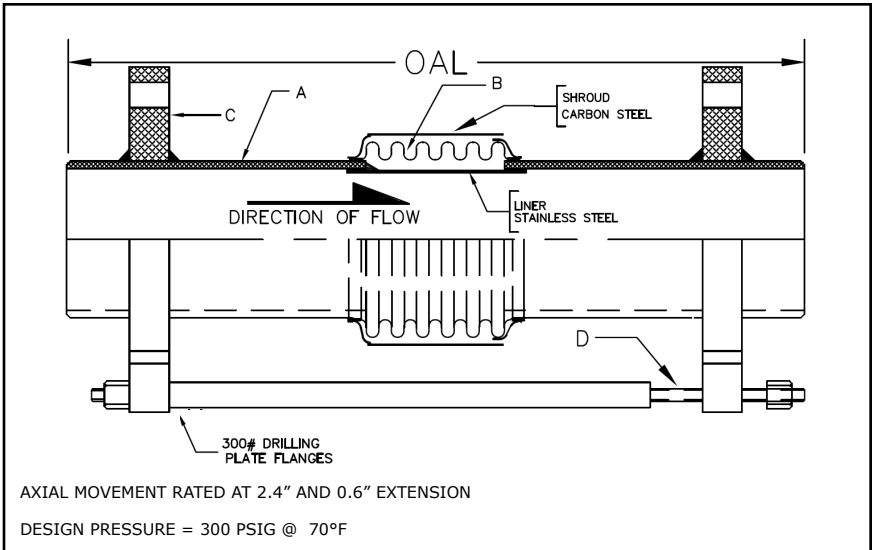
HVAC Products

**SUBMITTAL**

Mar 2018

**311 SERIES EXPANSION JOINT 3" TRAVEL W/WELD ENDS & TIE RODS - HIGH PRESSURE**

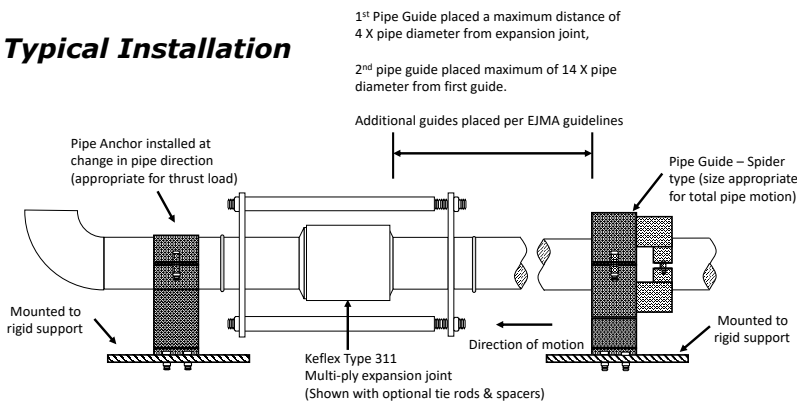
<b>PROJECT:</b>	
<b>CUSTOMER:</b>	
<b>ENGINEER:</b>	
<b>ARCHITECT:</b>	



MATERIALS OF CONSTRUCTION	
'A' PIPE SCH 40:	CARBON STEEL
'B' CAPSULE:	T-304 STN STL
'C' PLATE FLANGE:	CARBON STEEL
'D' TIE RODS/SPACERS	CARBON STEEL

QTY	ID # OR TAG #	DIA (IN)	KEFLEX PART #	OAL	AXIAL FORCE TO COMPRESS (LBS)	WEIGHT (LBS)	3D Model (.stp)
		8"	F080H311T903	20"	750	164	
		10"	F100H311T903	20"	1000	205	
		12"	F120H311T903	20"	600	277	

**Typical Installation**



IMPORTANT LINKS	
BROCHURE:	
INSTALLATION INSTRUCTIONS:	
TECHNICAL DATA:	
WEBSITE:	<a href="http://KELCOIND.COM">KELCOIND.COM</a>



**MADE IN THE USA**

**1425 LAKE AVE  
WOODSTOCK, IL 60098  
815-334-3600**