



HVAC Products

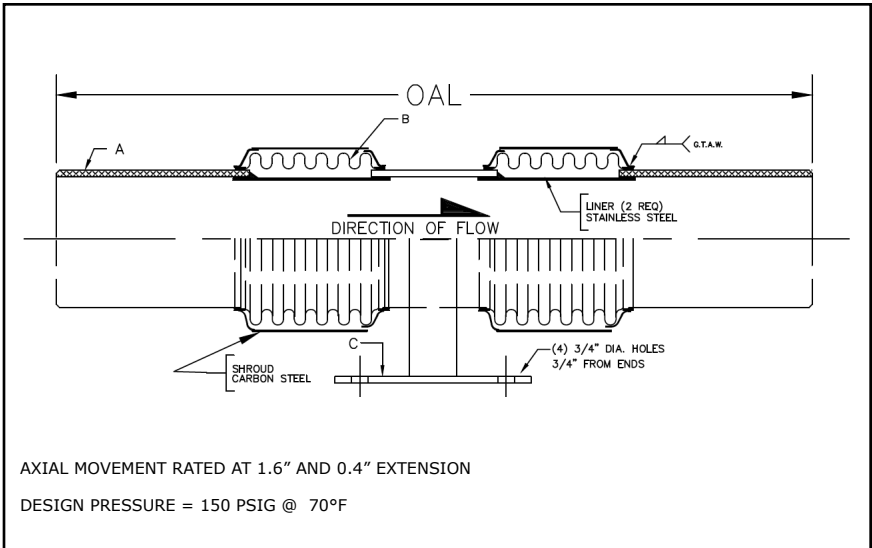
SUBMITTAL

Mar 2018

311 SERIES DUAL EXPANSION JOINT 2" TRAVEL W/WELD ENDS

PROJECT:	
CUSTOMER:	
ENGINEER:	
ARCHITECT:	

MATERIALS OF CONSTRUCTION	
'A' PIPE SCH 40:	CARBON STEEL
'B' CAPSULE:	T-304 STN STL
'C' BASE PLATE:	CARBON STEEL
'D' PLATE FLANGES:	CARBON STEEL



QTY	ID # OR TAG #	DIA (IN)	KEFLEX PART #	OAL	AXIAL FORCE TO COMPRESS (LBS)	WEIGHT (LBS)	3D Model (.stp)
		2"	F020M311DB902	25"	100	17	
		2 1/2"	F024M311DB902	25"	200	18	
		3"	F030M311DB902	25"	150	34	
		4"	F040M311DB902	25"	400	49	
		5"	F050M311DB902	25"	225	61	
		6"	F060M311DB902	25"	250	73	
		8"	F080M311DB902	25"	400	94	
		10"	F100M311DB902	25"	600	120	
		12"	F120M311DB902	25"	350	159	

Typical Installation

1st Pipe Guide (and anchor) placed a maximum distance of 4 X pipe diameter from expansion joint,

2nd pipe guide placed maximum of 14 X pipe diameter from first guide.

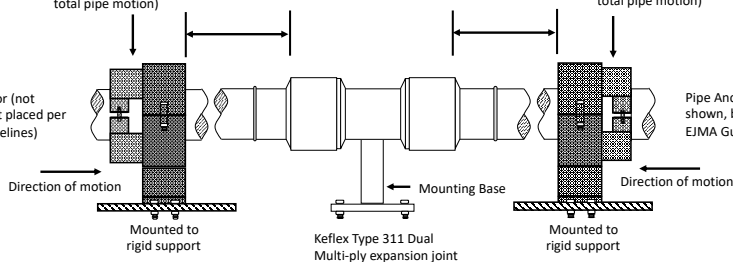
Additional guides placed per EJMA guidelines

Pipe Guide – Spider type (size appropriate for total pipe motion)

Pipe Guide – Spider type (size appropriate for total pipe motion)

Pipe Anchor (not shown, but placed per EJMA Guidelines)

Pipe Anchor (not shown, but placed per EJMA Guidelines)



MADE IN THE USA

IMPORTANT LINKS

BROCHURE:	
INSTALLATION INSTRUCTIONS:	
TECHNICAL DATA:	
WEBSITE:	KELCOIND.COM

1425 LAKE AVE
WOODSTOCK, IL 60098
815-334-3600