



HVAC Products

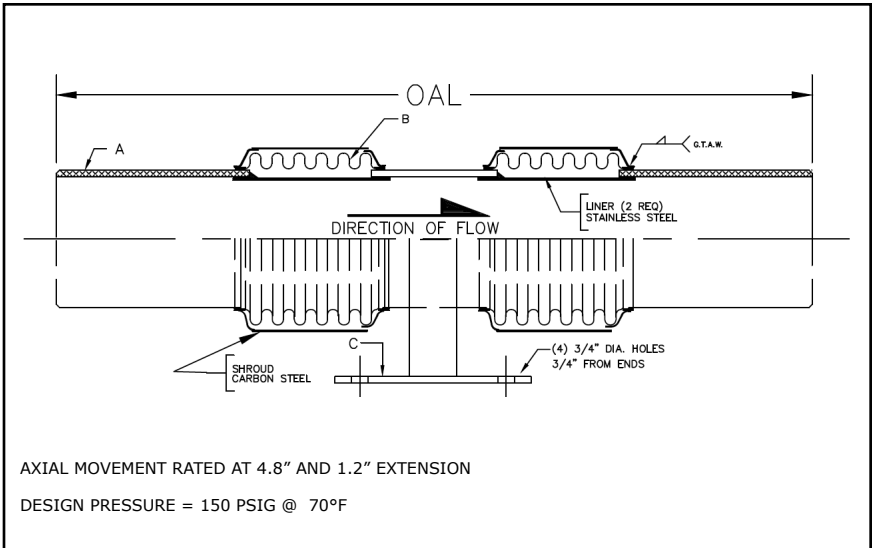
SUBMITTAL

Mar 2018

311 SERIES DUAL EXPANSION JOINT 6" TRAVEL W/WELD ENDS

PROJECT:	
CUSTOMER:	
ENGINEER:	
ARCHITECT:	

MATERIALS OF CONSTRUCTION	
'A' PIPE SCH 40:	CARBON STEEL
'B' CAPSULE:	T-304 STN STL
'C' BASE PLATE:	CARBON STEEL
'D' PLATE FLANGES:	CARBON STEEL



QTY	ID # OR TAG #	DIA (IN)	KEFLEX PART #	OAL	AXIAL FORCE TO COMPRESS (LBS)	WEIGHT (LBS)	3D Model (.stp)
		2"	F020M311DB906	36"	200	27	
		2 1/2"	F024M311DB906	36"	400	29	
		3"	F030M311DB906	36"	300	51	
		4"	F040M311DB906	36"	700	70	
		5"	F050M311DB906	36"	425	86	
		6"	F060M311DB906	36"	500	100	
		8"	F080M311DB906	36"	750	127	
		10"	F100M311DB906	36"	1000	157	
		12"	F120M311DB906	36"	600	208	

Typical Installation

1st Pipe Guide (and anchor) placed a maximum distance of 4 X pipe diameter from expansion joint,

2nd pipe guide placed maximum of 14 X pipe diameter from first guide.

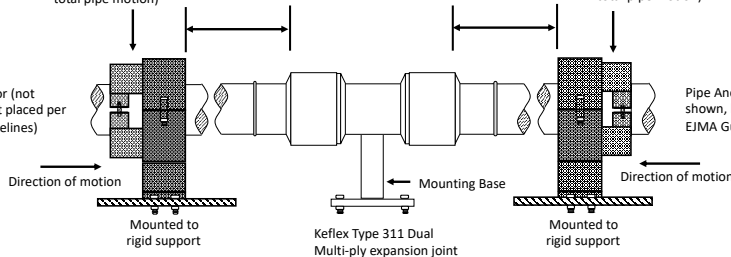
Additional guides placed per EJMA guidelines

Pipe Guide – Spider type (size appropriate for total pipe motion)

Pipe Guide – Spider type (size appropriate for total pipe motion)

Pipe Anchor (not shown, but placed per EJMA Guidelines)

Pipe Anchor (not shown, but placed per EJMA Guidelines)



IMPORTANT LINKS

BROCHURE:	
INSTALLATION INSTRUCTIONS:	
TECHNICAL DATA:	
WEBSITE:	KELCOIND.COM



MADE IN THE USA

**1425 LAKE AVE
WOODSTOCK, IL 60098
815-334-3600**