

# AC Frame Solenoid

## Model 2HD



1425 Lake Avenue, Woodstock, IL 60098



### Features:

- Available return spring kit
- AC & DC Applications (See Model 2HD DC)
- UL recognized
- RoHS Compliant
- Coil Termination: 3/16" QC terminals

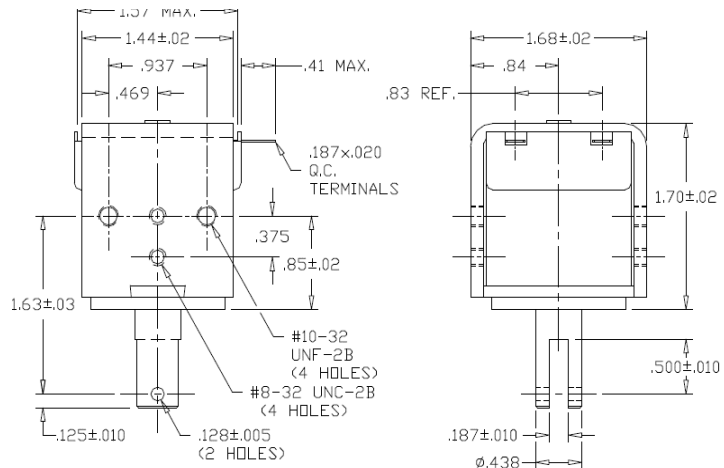
### Electrical:

- Coil Voltages: 120, 240 VAC standard
- Duty Cycle: 100% Continuous, 25% Intermittent, 10% Intermittent, 1% Intermittent
- Coil treatment: Plastic cover
- Insulation Class: Class A Rating - 105° C (221° F)
- Dielectric Strength: 1500V 60 Hz

### Mechanical:

- Size: 1.70" (L) x 1.68" (W) x 1.57" (H)
- Plunger Diameter: 0.438"
- Plunger Guide Material: Plastic
- Mounting: 4 - #8-32 holes
- Weight: Plunger 1.2 oz, Total 11.7 oz
- Life Expectancy: 1 Million Cycles<sup>1</sup>

<sup>1</sup> - Dependent on load conditions



Solenoid shown energized with plunger fully seated

### Standard Part Numbers

Model No.	Part No.	Duty Cycle	Voltage	Resistance <sup>2</sup> (Ω)	Power (W)	Current
2HD-C-120A	A420-065486-00	Cont.	120VAC	101	16.5	138 mA
2HD-I-120A	A420-065487-00	Inter. 25%	120VAC	42	66	550 mA
2HD-C-240A	A420-065488-00	Cont.	240VAC	404	16.5	69 mA
2HD-I-240A	A420-065489-00	Inter. 25%	240VAC	140	66	275 mA

<sup>2</sup> - Coil resistance tolerance +/- 5%

Contact us for custom voltages or duty cycles

**Available Customization:**

- Plunger
- AC Voltage / Duty Cycle
- Coil Termination
- Insulation systems up to class H 180° C (356° F)

**\* Minimum quantities apply**

Stroke (in.)	Typical Pull Force Ounces [N] @ 20°C (68°F) (Distance from fully seated position)						HOLDING FORCE Ounces [N]
	0.125	0.250	0.375	0.500	0.625	0.750	
Continuous 100%	26 [7.2]	22 [6.1]	20 [5.6]	18 [5]	14 [3.9]	9 [2.5]	55 [15.3]
Intermittent 25%	64 [17.8]	52 [14.5]	48 [13.3]	40 [11.1]	32 [8.9]	20 [5.6]	70 [19.5]

Continuous Duty = 100% On Time  
Intermittent Duty 25% = 25% On Time (5 Minutes On Max Followed By 15 Minutes Off)

Optional Return Spring Kit

A490-367462-00



www.kelcoind.com

Information contained in this specification sheet subject to change without notice. Guardian Electric ©

