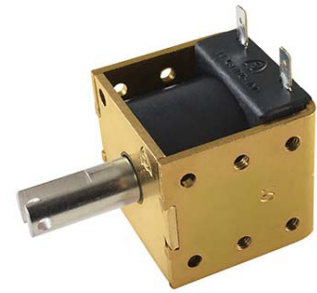


# AC Frame Solenoid

## Model 2



1425 Lake Avenue, Woodstock, IL 60098



### Features:

- Available return spring kit
- AC & DC Applications (See Model 2 DC)
- UL recognized
- RoHS Compliant
- Coil Termination: 3/16" QC terminals

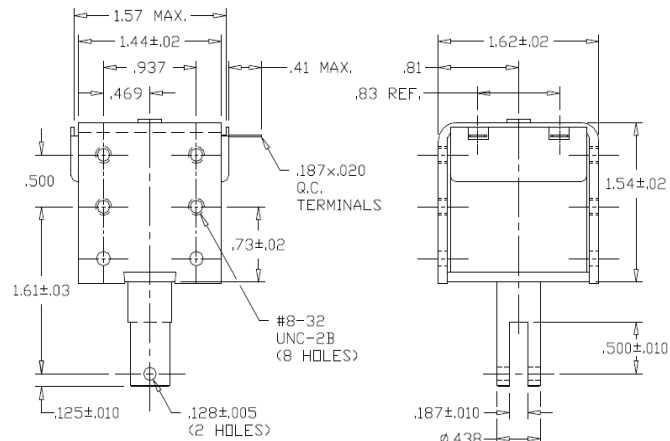
### Electrical:

- Coil Voltages: 120, 240 VAC standard
- Duty Cycle: 100% Continuous, 25% Intermittent, 10% Intermittent, 1% Intermittent
- Coil treatment: Plastic cover
- Insulation Class: Class A Rating - 105° C (221° F)
- Dielectric Strength: 1500V 60 Hz

### Mechanical:

- Size: 1.54" (L) x 1.57" (W) x 1.62" (H)
- Plunger Diameter: 0.438"
- Plunger Guide Material: Plastic
- Mounting: 8 - #8-32 holes
- Weight: Plunger 1.1 oz, Total 9.5 oz
- Life Expectancy: 1 Million Cycles<sup>1</sup>

<sup>1</sup> - Dependent on load conditions



Solenoid shown energized with plunger fully seated

### Standard Part Numbers

Model No.	Part No.	Duty Cycle	Voltage	Resistance <sup>2</sup> (Ω)	Power (W)	Current
2-C-120A	A420-065506-00	Cont.	120VAC	140	13	108 mA
2-I-120A	A420-065507-00	Inter. 25%	120VAC	45	44	367 mA
2-C-240A	A420-065508-00	Cont.	240VAC	650	13	54 mA
2-I-240A	A420-065509-00	Inter. 25%	240VAC	245	44	183 mA

<sup>2</sup> - Coil resistance tolerance +/- 5%

Contact us for custom voltages or duty cycles



### Available Customization:

- Plunger
  - AC Voltage / Duty Cycle
  - Coil Termination
  - Insulation systems up to class H 180° C (356° F)
- \* Minimum quantities apply

Stroke (in.)	Typical Pull Force Ounces [N] @ 20°C (68°F) (Distance from fully seated position)							HOLDING FORCE Ounces [N]
	0.125	0.250	0.375	0.500	0.625	0.750		
Continuous 100%	20 [5.6]	17 [4.7]	16 [4.4]	14 [3.9]	10 [2.8]	6 [1.7]	50 [13.9]	
Intermittent 25%	54 [15]	45 [12.5]	42 [11.7]	36 [10]	26 [7.2]	15 [4.2]	80 [22.2]	

Continuous Duty = 100% On Time  
Intermittent Duty 25% = 25% On Time (5 Minutes On Max Followed By 15 Minutes Off)

Optional Return Spring Kit

A490-367462-00



www.kelcoind.com

Information contained in this specification sheet subject to change without notice. Guardian Electric ©

