

DC Frame Solenoid

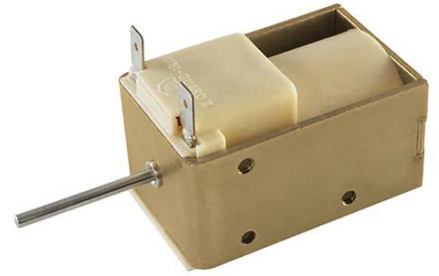
Model 11P



1425 Lake Avenue, Woodstock, IL 60098

Features:

- Push Solenoid
- AC & DC Applications (See Model 11P AC)
- RoHS Compliant
- UL Recognized
- Coil Termination: 3/16" QC terminals



Electrical:

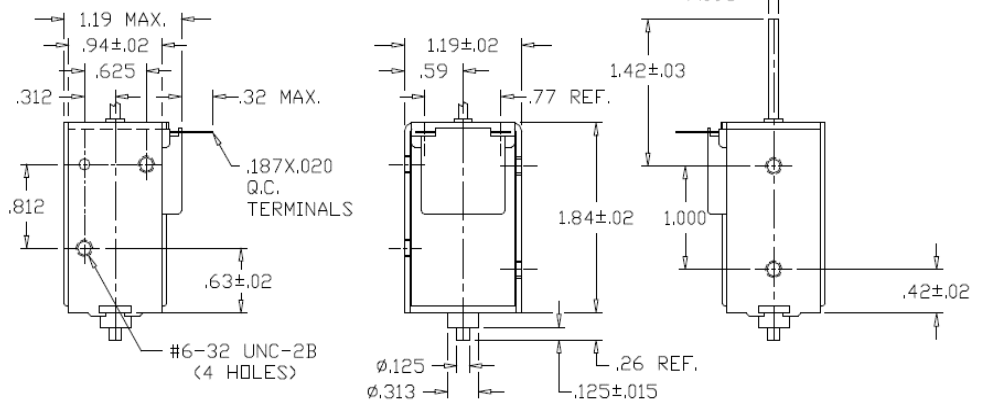
- Coil Voltages: 6, 12, 24, 48, 110 VDC standard
- Duty Cycle: 100% Continuous, 25% Intermittent
- Coil treatment: Plastic cover
- Insulation Class: Class A Rating - 105° C (221° F)
- Dielectric Strength: 1500V 60 Hz



Mechanical:

- Size: 1.84" (L) x 1.19" (W) x 1.19" (H)
- Plunger Diameter: 0.187"
- Plunger Guide Material: Plastic
- Mounting: 4- #6-32 holes
- Weight: Plunger 1.1 oz, Total 9.5 oz
- Life Expectancy: 1 Million Cycles¹

¹ - Dependent on load conditions



Solenoid shown energized with plunger fully seated in extended position

Standard Part Numbers

Model No.	Part No.	Duty Cycle	Voltage	Resistance ² (Ω)	Power (W)	Current
11P-C-12D	A420-065712-00	Cont.	12VDC	23.2	6.3	517 mA
11P-I-12D	A420-065713-00	Inter. 25%	12VDC	7.5	20.2	1.6 A
11P-C-24D	A420-065714-00	Cont.	24VDC	93.1	6.5	268 mA
11P-I-24D	A420-065715-00	Inter. 25%	24VDC	29.1	20.8	825 mA

² - Coil resistance tolerance +/- 5%

Contact us for custom voltages or duty cycles



Available Customization:

- Plunger
 - DC Voltage / Duty Cycle
 - Termination
 - Insulation systems up to class H 180° C (356° F)
- * Minimum quantities apply

Stroke (in.)	Typical Push Force Ounces [N] @ 20°C (68°F) (Distance from fully extended position)									HOLDING FORCE Ounces [N]	Power (W)
	0.050	0.125	0.250	0.375	0.500	0.625	0.750	1.000			
Continuous 100%	35 [9.7]	21 [5.8]	10 [2.8]	6 [1.7]	4 [1.1]	2 [0.6]	1 [0.3]	N/A	82 [22.8]	7.8	
Intermittent 25%	62 [17.2]	46 [12.8]	27 [7.5]	18 [5.0]	10 [2.8]	8 [2.2]	6 [1.7]	5 [1.4]	93 [25.9]	20.2	

Continuous Duty 100% = 100% On Time

Intermittent Duty 25% = 25% On Time (100 Seconds On Max Followed By 300 Seconds Off)



www.kelcoind.com

Information contained in this specification sheet subject to change without notice. Guardian Electric ©

