

DC Frame Solenoid

Model 28HD



1425 Lake Avenue, Woodstock, IL 60098

Features:

- Available return spring kit
- AC & DC Applications (See Model 28HD AC)
- RoHS Compliant
- UL recognized
- Coil Termination: 3/16" QC terminals

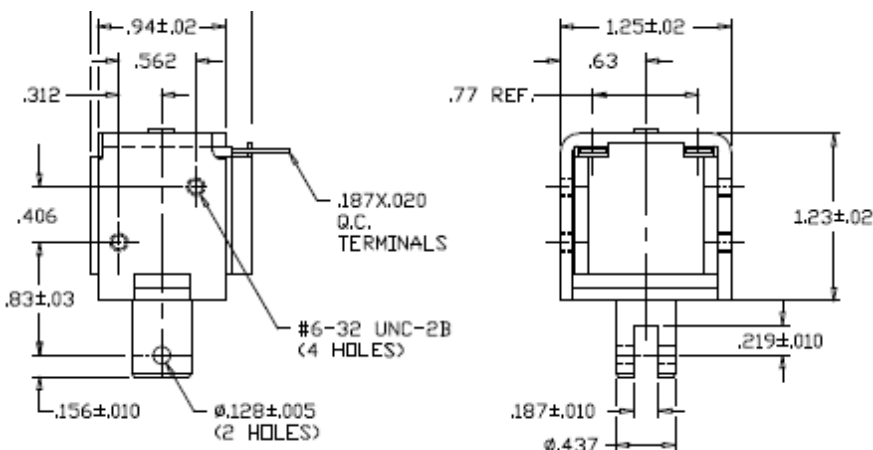
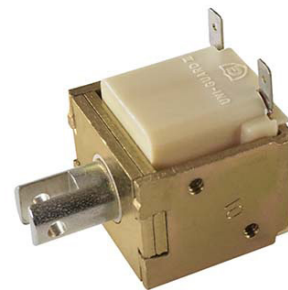
Electrical:

- Coil Voltages: 6, 12, 24, 48, 110VDC standard
- Duty Cycle: 100% Continuous, 25% Intermittent, 10% Intermittent, 1% Pulse
- Coil treatment: Plastic cover
- Insulation Class: Class A Rating - 105° C (221° F)
- Dielectric Strength: 1500V 60 Hz

Mechanical:

- Size: 1.54" (L) x 1.62" (W) x 1.57" (H)
- Plunger Diameter: 0.438"
- Plunger Guide Material: Plastic
- Mounting: 2 - #6-32 holes
- Weight: Plunger .9 oz, Total 4.7 oz
- Life Expectancy: 1 Million Cycles¹

¹ - Dependent on load conditions



Solenoid shown energized with plunger fully seated

Standard Part Numbers

Model No.	Part No.	Duty Cycle	Voltage	Resistance ² (Ω)	Power (W)	Current
28HD-C-12D	A420-065962-00	Cont.	12VDC	30.1	5	399 mA
28HD-I-12D	A420-065963-00	Inter. 25%	12VDC	12.2	12.4	984 mA
28HD-C-24D	A420-065964-00	Cont.	24VDC	119	5.1	202 mA
28HD-I-24D	A420-065965-00	Inter. 25%	24VDC	49	12.3	490 mA

² - Coil resistance tolerance +/- 5%

Contact us for custom voltages or duty cycles

Available Customization:

- Plunger
- DC Voltage / Duty Cycle
- Coil Termination
- Insulation systems up to class H 180° C (356° F)

*** Minimum quantities apply**

Stroke (in.)	Typical Pull Force Ounces [N] @ 20°C (68°F) (Distance from fully seated position)						HOLDING FORCE Ounces [N]	Power (W)
	0.050	0.125	0.250	0.375	0.500	0.625		
Continuous 100%	30 [8.3]	12 [3.3]	6 [1.7]	4 [1.1]	1 [0.3]	N/A	76 [21.1]	5.1
Intermittent 25%	65 [18.1]	30 [8.3]	12 [3.3]	8 [2.2]	5 [1.4]	N/A	92 [25.6]	12.4
Intermittent 10% ³	135 [37.5]	90 [25]	48 [13.3]	25 [7]	15 [4.2]	4 [1.1]	95 [26.4]	47.3
Pulse 1% ³	175 [48.7]	145 [40.3]	90 [25]	50 [13.9]	25 [7]	10 [2.8]	N/A	92.7

Continuous Duty 100% = 100% On Time
 Intermittent Duty 25% = 25% On Time (100 Seconds On Max Followed By 300 Seconds Off)
 Intermittent Duty 10% = 90% On Time (10 Seconds On Max Followed By 90 Seconds Off)
 Pulse Duty 1% = 99% On Time (1 Second On Max Followed By 99 Seconds Off)
³ - Calculated force values to be verified in application

Optional Return Spring Kit

A490-367461-09



www.kelcoind.com

Information contained in this specification sheet subject to change without notice. Guardian Electric ©

