



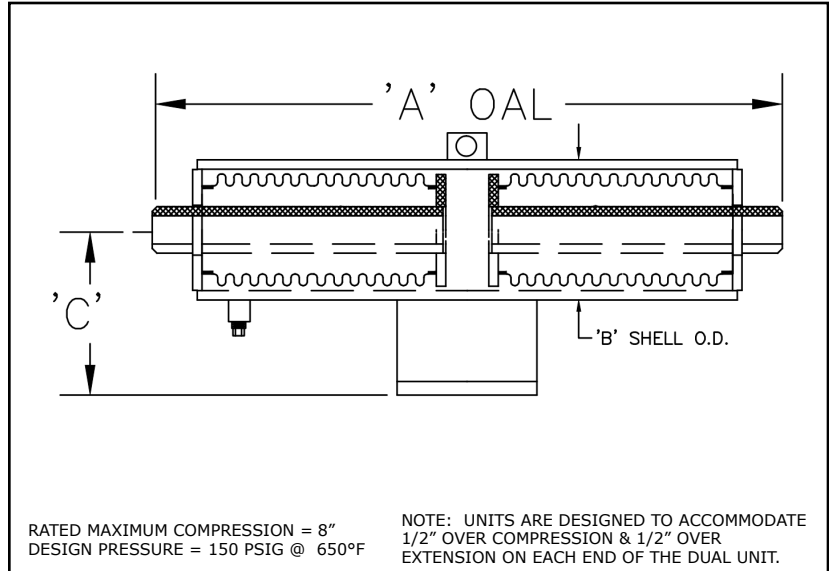
HVAC Products

# SUBMITTAL

Mar 2018

**DUAL EXTERNALLY PRESSURIZED EXPANSION JOINT 150# 8" COMPRESSION W/WELD ENDS**

PROJECT:	
CUSTOMER:	
ENGINEER:	
ARCHITECT:	



MATERIALS OF CONSTRUCTION	
BELLOW:	300 SERIES STAINLESS STEEL
PIPE:	CARBON STEEL SCH. STD.
PLATES:	CARBON STEEL

QTY	ID # OR TAG #	DIAMETER (IN)	KEFLEX PART #	PRESSURE THRUST @ DESIGN PRES.	'A' OAL	'B' SHELL O.D.	'C' C/L	SPRING RATE (LB/IN)	3D Model (.stp)
		1"	F010DEP04M09S	1200 LBF	35 3/4"	4 1/2"	4"	40	
		1 1/4"	F012DEP04M09S	1200 LBF	36 1/4"	4 1/2"	4"	40	
		1 1/2"	F014DEP04M09S	1200 LBF	36 1/4"	4 1/2"	4"	40	
		2"	F020DEP04M09S	1200 LBF	36 3/4"	4 1/2"	4 1/2"	40	
		2 1/2"	F024DEP21M09S	3000 LBF	42 1/2"	6 5/8"	4 1/2"	160	
		3"	F030DEP21M09S	3000 LBF	42 1/2"	6 5/8"	5"	160	
		3 1/2"	F034DEP21M09S	3000 LBF	42 1/2"	6 5/8"	6 1/4"	160	
		4"	F040DEP21M09S	4500 LBF	39 3/4"	8 5/8"	6 1/4"	165	
		5"	F050DEP21M09S	10100 LBF	43 1/2"	10 3/4"	7 1/2"	320	
		6"	F060DEP21M09S	10100 LBF	43 1/2"	10 3/4"	7 1/2"	320	
		8"	F080DEP21M09S	12250 LBF	40 1/2"	12 3/4"	8 1/2"	440	
		10"	F100DEP21M09S	18300 LBF	40 1/2"	16"	10 1/4"	490	
		12"	F120DEP21M09S	25200 LBF	40 1/2"	18"	11 1/4"	850	

IMPORTANT LINKS	
BROCHURE:	
INSTALLATION INSTRUCTIONS:	
WEBSITE:	<a href="http://FLEX-WELD.COM">FLEX-WELD.COM</a>



MADE IN THE USA

**1425 LAKE AVE  
 WOODSTOCK, IL 60098  
 800-323-6893**