



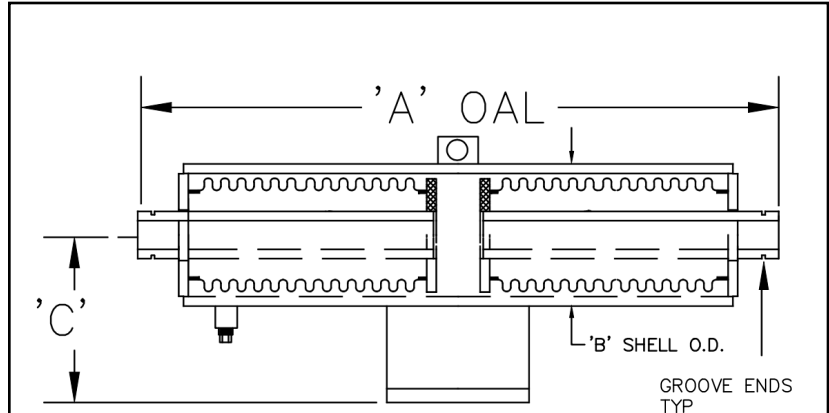
HVAC Products

SUBMITTAL

Mar 2018

DUAL EXTERNALLY PRESSURIZED EXPANSION JOINT 300# 8" COMPRESSION W/GROOVE ENDS

PROJECT:	
CUSTOMER:	
ENGINEER:	
ARCHITECT:	



MATERIALS OF CONSTRUCTION	
BELLOW:	T-321 STAINLESS STEEL
PIPE:	CARBON STEEL SCH. STD.
PLATES:	CARBON STEEL

RATED MAXIMUM COMPRESSION = 8"
 DESIGN PRESSURE = 300 PSIG @ 650°F

NOTE: UNITS ARE DESIGNED TO ACCOMMODATE 1/2" OVER COMPRESSION & 1/2" OVER EXTENSION ON EACH END OF THE DUAL UNIT.

QTY	ID # OR TAG #	DIAMETER (IN)	KEFLEX PART #	PRESSURE THRUST @ DESIGN PRES.	'A' OAL	'B' SHELL O.D.	'C' C/L	SPRING RATE (LB/IN)	3D Model (.stp)
		1"	F010DEP21HVGS	2400 LBF	37 3/4"	4 1/2"	4"	60	
		1 1/4"	F012DEP21HVGS	2400 LBF	38 1/4"	4 1/2"	4"	60	
		1 1/2"	F014DEP21HVGS	2400 LBF	38 1/4"	4 1/2"	4"	60	
		2"	F020DEP21HVGS	2400 LBF	38 3/4"	4 1/2"	4 1/2"	60	
		2 1/2"	F024DEP21HVGS	6100 LBF	44 1/2"	6 5/8"	4 1/2"	230	
		3"	F030DEP21HVGS	6100 LBF	44 1/2"	6 5/8"	5"	230	
		3 1/2"	F034DEP21HVGS	6100 LBF	44 1/2"	6 5/8"	6 1/4"	230	
		4"	F040DEP21HVGS	9000 LBF	41 3/4"	8 5/8"	6 1/4"	230	
		5"	F050DEP21HVGS	20500 LBF	45 1/2"	10 3/4"	7 1/2"	500	
		6"	F060DEP21HVGS	20500 LBF	45 1/2"	10 3/4"	7 1/2"	500	
		8"	F080DEP21HVGS	24500 LBF	42 1/2"	12 3/4"	8 1/2"	600	
		10"	F100DEP21HVGS	36700 LBF	42 1/2"	16"	10 1/4"	850	
		12"	F120DEP21HVGS	50500 LBF	42 1/2"	18"	11 1/4"	1250	

IMPORTANT LINKS	
BROCHURE:	
INSTALLATION INSTRUCTIONS:	
WEBSITE:	FLEX-WELD.COM

MADE IN THE USA

**1425 LAKE AVE
 WOODSTOCK, IL 60098
 800-323-6893**