



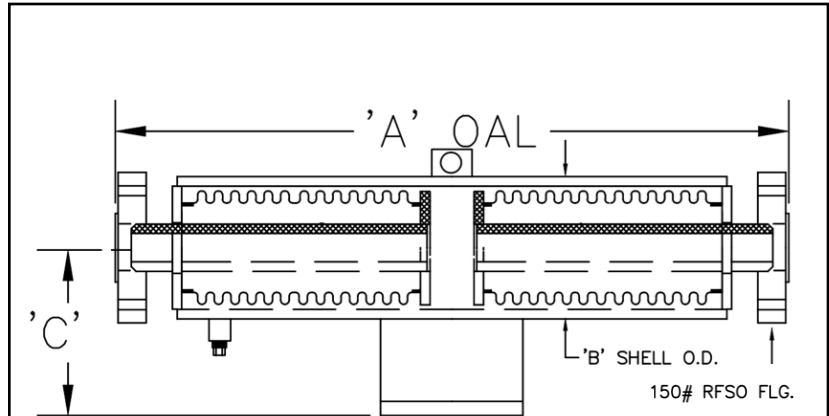
HVAC Products

SUBMITTAL

Mar 2018

DUAL EXTERNALLY PRESSURIZED EXPANSION JOINT 150# 16" COMPRESSION W/150# RFSO FLG

PROJECT:	
CUSTOMER:	
ENGINEER:	
ARCHITECT:	



MATERIALS OF CONSTRUCTION	
BELLOW:	300 SERIES STAINLESS STEEL
PIPE:	CARBON STEEL SCH. STD.
PLATES:	CARBON STEEL
FLANGE:	CARBON STEEL

RATED MAXIMUM COMPRESSION = 16"
DESIGN PRESSURE = 150 PSIG @ 650°F

NOTE: UNITS ARE DESIGNED TO ACCOMMODATE
1/2" OVER COMPRESSION & 1/2" OVER
EXTENSION ON EACH END OF THE DUAL UNIT.

QTY	ID # OR TAG #	DIAMETER (IN)	KEFLEX PART #	PRESSURE THRUST @ DESIGN PRES.	'A' OAL	'B' SHELL O.D.	'C' C/L	SPRING RATE (LB/IN)	3D Model (.stp)
		1"	F010DEP04M15L	1200 LBF	63 1/2"	4 1/2"	4"	20	
		1 1/4"	F012DEP04M15L	1200 LBF	63 3/4"	4 1/2"	4"	20	
		1 1/2"	F014DEP04M15L	1200 LBF	63 3/4"	4 1/2"	4"	20	
		2"	F020DEP04M15L	1200 LBF	65"	4 1/2"	4 1/2"	20	
		2 1/2"	F024DEP21M15L	3000 LBF	77"	6 5/8"	4 1/2"	80	
		3"	F030DEP21M15L	3000 LBF	77"	6 5/8"	5"	80	
		3 1/2"	F034DEP21M15L	3000 LBF	77"	6 5/8"	6 1/4"	80	
		4"	F040DEP21M15L	4500 LBF	69 1/2"	8 5/8"	6 1/4"	85	
		5"	F050DEP21M15L	10100 LBF	79"	10 3/4"	7 1/2"	160	
		6"	F060DEP21M15L	10100 LBF	79"	10 3/4"	7 1/2"	160	
		8"	F080DEP21M15L	12250 LBF	72"	12 3/4"	8 1/2"	240	
		10"	F100DEP21M15L	18300 LBF	72"	16"	10 1/4"	240	
		12"	F120DEP21M15L	25200 LBF	72"	18"	11 1/4"	430	

IMPORTANT LINKS

BROCHURE:	
INSTALLATION INSTRUCTIONS:	
WEBSITE:	KELCOIND.COM



MADE IN THE USA

**1425 LAKE AVE
WOODSTOCK, IL 60098
815-334-3600**