

Model LT8x16



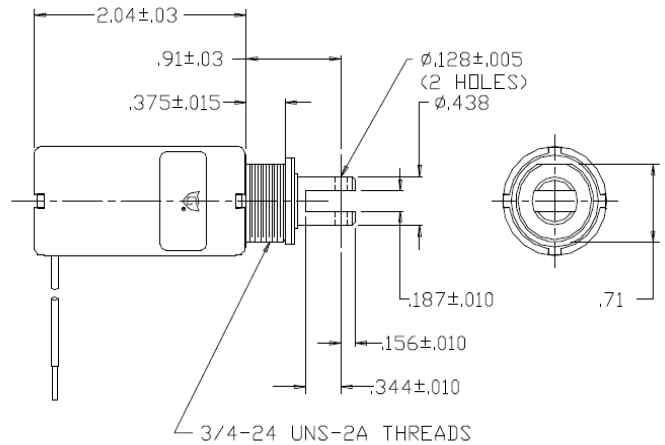
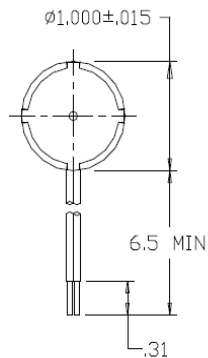
Features:

- Long life construction
- Plunger stop for quiet operation
- DC solenoid applications only
- RoHS Compliant
- UL Recognized
- Stainless steel guide tube
- Teflon coated plunger
- Coil Termination: 6.5" Wire leads
22 AWG (standard)



Electrical:

Coil Voltages: 6, 12, 24, 48, 110 VDC standard
Duty Cycle: 100% Continuous, 25% Intermittent,
10% Intermittent, 1% Pulse
Coil treatment: Tape Wrapped
Insulation Class: Class A Rating - 105°C (221°F)
Dielectric Strength: 1500V 60 Hz



Mechanical:

Size: 2" (L) x 1" (D)
Plunger Diameter: 0.437"
Plunger Guide Material: Stainless Steel
Mounting: Hex Nut
Weight: Plunger 1.4 oz, Total 6.4 oz
Life Expectancy: 10 Million Cycles¹

Standard Part Numbers

Model No.	Part No.	Duty Cycle	Voltage	Resistance ² (Ω)	Power (W)	Current
LT8x16-C-12D	A420-064850-00	Cont.	12VDC	19.3	7.8	622 mA
LT8x16-I-12D	A420-064851-00	Inter.	12VDC	6.2	24.4	1.94 A
LT8x16-C-24D	A420-064852-00	Cont.	24VDC	77.2	7.8	311 mA
LT8x16-I-24D	A420-064853-00	Inter.	24VDC	29.7	20.4	808 mA

2 - Coil resistance tolerance +/- 5%

Contact us for custom voltages or duty cycles

Solenoid shown energized with plunger fully seated
Supplied with mounting bracket, hex nut and lock washer shipped loose

Available Customization:

- Plunger
 - Lead and Connector
 - DC Voltage / Duty Cycle
 - Termination
 - Insulation systems up to class H 180° C (356° F)
- * Minimum quantities apply**

* Minimum quantities apply

Typical Pull Force Ounces [N] @ 20°C (68°F) (Distance from fully seated position)									HOLDING FORCE Ounces [N]	Power (W)
Stroke (in.)	0.050	0.125	0.250	0.375	0.500	0.625	0.750	1.000		
Continuous 100%	45 [12.5]	28 [7.8]	12 [3.3]	9 [2.5]	5 [1.4]	3 [0.8]	1 [0.3]	N/A	43 [12.0]	7.8
Intermittent 25%	80 [22.2]	55 [15.3]	35 [9.7]	25 [7]	15 [4.2]	10 [2.8]	3 [0.8]	N/A	66 [18.4]	23
Intermittent 10% ³	124 [34.5]	99 [27.5]	75 [20.9]	60 [16.7]	45 [12.5]	38 [10.6]	28 [7.8]	7 [1.9]	455 [126.5]	72.2
Pulse 1% ³	154 [42.8]	138 [38.4]	120 [33.4]	89 [24.7]	74 [20.6]	60 [16.7]	50 [13.9]	15 [4.2]	N/A	146.8

Continuous Duty 100% = 100% On Time

Intermittent Duty 25% = 25% On Time (100 Seconds On Max Followed By 300 Seconds Off)

Intermittent Duty 10% = 90% On Time (10 Seconds On Max Followed By 90 Seconds Off)

Pulse Duty 1% = 99% On Time (1 Second On Max Followed By 99 Seconds Off)

³ - Calculated force values to be verified in application



 www.Kelcoind.com

Information contained in this specification sheet subject to change without notice. Guardian Electric ©

