

DC Frame Solenoid

Model 11HD



1425 Lake Avenue, Woodstock, IL 60098

Features:

Available return spring kit
AC & DC Applications (See Model 11HD AC)
RoHS Compliant
UL Recognized
Coil Termination: 3/16" QC terminals

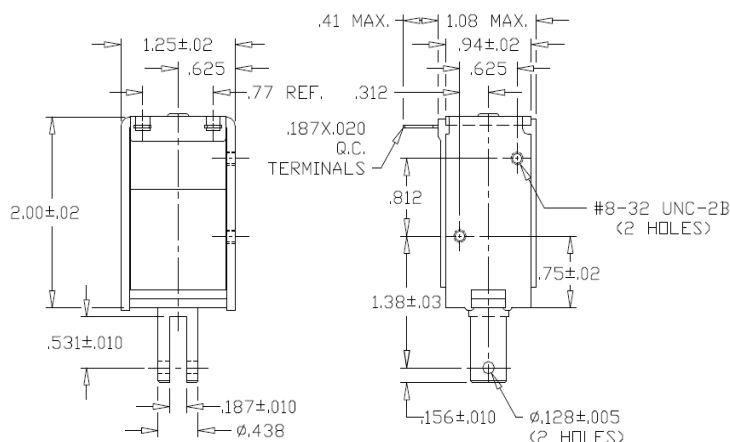
Electrical:

Coil Voltages: 6, 12, 24, 48, 110 VDC standard
Duty Cycle: 100% Continuous, 25% Intermittent,
10% Intermittent, 1% Pulse
Coil treatment: Plastic cover
Insulation Class: Class A Rating - 105° C (221° F)
Dielectric Strength: 1500V 60 Hz

Mechanical:

Size: 1.54" (L) x 1.62" (W) x 1.57" (H)
Plunger Diameter: 0.313"
Plunger Guide Material: Plastic
Mounting: 4 - #6-32 holes
Weight: Plunger 1.3 oz, Total 6.5 oz
Life Expectancy: 1 Million Cycles¹

¹ - Dependent on load conditions



Solenoid shown energized with plunger fully seated

Standard Part Numbers

| Model No. | Part No. | Duty Cycle | Voltage | Resistance ² (Ω) | Power (W) | Current |
|------------|----------------|------------|---------|--------------------------------|--------------|---------|
| 11HD-C-12D | A420-065762-00 | Cont. | 12VDC | 19 | 8 | 632 mA |
| 11HD-I-12D | A420-065763-00 | Inter. 25% | 12VDC | 7.8 | 19.4 | 1.54 A |
| 11HD-C-24D | A420-065764-00 | Cont. | 24VDC | 76.3 | 7.9 | 315 mA |
| 11HD-I-24D | A420-065765-00 | Inter. 25% | 24VDC | 29.3 | 20.6 | 819 mA |

² - Coil resistance tolerance +/- 5%

Contact us for custom voltages or duty cycles



Available Customization:

- Plunger
 - DC Voltage / Duty Cycle
 - Coil Termination
 - Insulation systems up to class H 180° C (356° F)
- * Minimum quantities apply

| Typical Pull Force Ounces [N] @ 20°C (68°F) (Distance from fully seated position) | | | | | | | | | HOLDING FORCE Ounces [N] | Power (W) |
|--|------------|------------|------------|------------|-----------|-----------|-----------|----------|--------------------------------|--------------|
| Stroke (in.) | 0.050 | 0.125 | 0.250 | 0.375 | 0.500 | 0.625 | 0.750 | 1.000 | | |
| Continuous 100% | 70 [19.5] | 35 [9.7] | 14 [3.9] | 8 [2.2] | 5 [1.4] | 3 [0.8] | 2 [0.6] | 1 [0.3] | 150 [41.7] | 8 |
| Intermittent 25% | 100 [27.8] | 73 [20.3] | 35 [9.7] | 22 [6.1] | 18 [5] | 10 [2.8] | 7 [1.9] | 5 [1.4] | 168 [46.7] | 20 |
| Intermittent 10% ³ | 150 [41.7] | 115 [32] | 82 [22.8] | 60 [16.7] | 42 [11.7] | 30 [8.3] | 20 [5.6] | 10 [2.8] | 180 [50] | 72.2 |
| Pulse 1% ³ | 190 [52.8] | 170 [47.3] | 138 [38.4] | 110 [30.6] | 90 [25] | 65 [18.1] | 55 [15.3] | 25 [7] | N/A | 146.8 |

Continuous Duty 100% = 100% On Time

Intermittent Duty 25% = 25% On Time (100 Seconds On Max Followed By 300 Seconds Off)

Intermittent Duty 10% = 90% On Time (10 Seconds On Max Followed By 90 Seconds Off)

Pulse Duty 1% = 99% On Time (1 Second On Max Followed By 99 Seconds Off)

³ - Calculated force values to be verified in application

Optional Return Spring Kit

A490-367461-06



www.Kelcoind.com

Information contained in this specification sheet subject to change without notice. Guardian Electric ©

