

AC Frame Solenoid

Model 26



1425 Lake Avenue, Woodstock, IL 60098

Features:

AC & DC Applications (See Model 26 DC)
UL recognized
RoHS Compliant
Coil Termination: 3/16" QC terminals

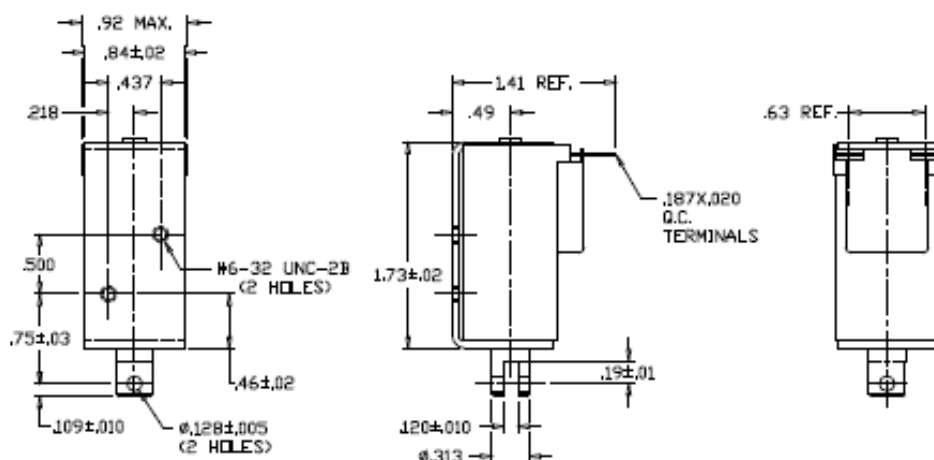
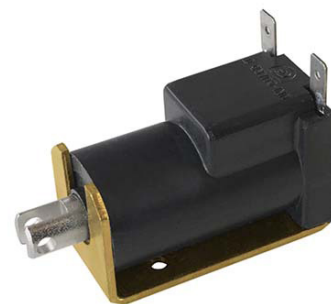
Electrical:

Coil Voltages: 120, 240 VAC standard
Duty Cycle: 100% Continuous, 20% Intermittent,
Coil treatment: Plastic cover
Insulation Class: Class A Rating - 105° C (221° F)
Dielectric Strength: 1500V 60 Hz

Mechanical:

Size: 1.73" (L) x 0.92" (W) x 1.13" (H)
Plunger Diameter: 0.187"
Plunger Guide Material: Plastic
Mounting: 2 - #6-32 holes
Weight: Plunger 0.5 oz, Total 3.2 oz
Life Expectancy: 1 Million Cycles¹

¹ - Dependent on load conditions



Solenoid shown energized with plunger fully seated

Standard Part Numbers

Model No.	Part No.	Duty Cycle	Voltage	Resistance ² (Ω)	Power (W)	Current
26-C-120A	A420-065536-00	Cont.	120VAC	412	12	100 mA
26-I-120A	A420-065537-00	Inter. 20%	120VAC	140	24	200 A
26-C-240A	A420-065538-00	Cont.	240VAC	1000	12	50 mA
26-I-240A	A420-065539-00	Inter. 20%	240VAC	560	24	100 mA

² - Coil resistance tolerance +/- 5%

Contact us for custom voltages or duty cycles



Available Customization:

- Plunger
- AC Voltage / Duty Cycle
- Coil Termination
- Insulation systems up to class H 180° C (356° F)

* Minimum quantities apply

Typical Pull Force Ounces [N] @ 20°C (68°F) (Distance from fully seated position)								HOLDING FORCE Ounces [N]
Stroke (in.)	0.125	0.250	0.375	0.500	0.625	0.750	1.000	
Continuous 100%	10 [2.8]	8 [2.2]	7 [2.0]	7 [2.0]	6 [1.7]	1 [0.3]	N/A	15 [4.2]
Intermittent 20%	20 [5.6]	20 [5.6]	14 [3.9]	12 [3.3]	10 [2.8]	8 [2.2]	2 [0.6]	27 [7.5]

Continuous Duty = 100% On Time

Intermittent Duty 20% = 20% On Time (4 Minutes On Max Followed By 16 Minutes Off)



www.Kelcoind.com

Information contained in this specification sheet subject to change without notice. Guardian Electric ©

