

# DC Frame Solenoid

## Model 2HD



1425 Lake Avenue, Woodstock, IL 60098

### Features:

Available return spring kit  
AC & DC Applications (See Model 2HD AC)  
RoHS Compliant  
UL recognized  
Coil Termination: 3/16" QC terminals

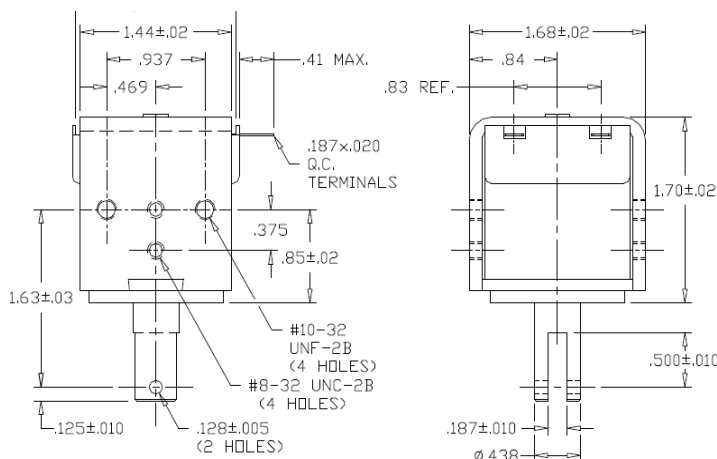
### Electrical:

Coil Voltages: 6, 12, 24, 48, 110 VDC standard  
Duty Cycle: 100% Continuous, 25% Intermittent,  
10% Intermittent, 1% Pulse  
Coil treatment: Plastic cover  
Insulation Class: Class A Rating - 105° C (221° F)  
Dielectric Strength: 1500V 60 Hz

### Mechanical:

Size: 1.70" (L) x 1.68" (W) x 1.57" (H)  
Plunger Diameter: 0.438"  
Plunger Guide Material: Plastic  
Mounting: 8 - #8-32 holes  
Weight: Plunger 1.2 oz, Total 11.7 oz  
Life Expectancy: 1 Million Cycles<sup>1</sup>

<sup>1</sup> - Dependent on load conditions



Solenoid shown energized with plunger fully seated

### Standard Part Numbers

Model No.	Part No.	Duty Cycle	Voltage	Resistance <sup>2</sup> (Ω)	Power (W)	Current
2HD-C-12D	A420-065492-00	Cont.	12VDC	18.1	8.4	663 mA
2HD-I-12D	A420-065493-00	Inter. 25%	12VDC	5.8	26.1	2.07 A
2HD-C-24D	A420-065494-00	Cont.	24VDC	71	8.5	338 mA
2HD-I-24D	A420-065495-00	Inter. 25%	24VDC	22.6	26.8	1.06 A

<sup>2</sup> - Coil resistance tolerance +/- 5%

Contact us for custom voltages or duty cycles

### Available Customization:

- Plunger
  - DC Voltage / Duty Cycle
  - Termination
  - Insulation systems up to class H 180° C (356° F)
- \* Minimum quantities apply

Typical Pull Force Ounces [N] @ 20°C (68°F) (Distance from fully seated position)									HOLDING FORCE Ounces [N]	Power (W)
Stroke (in.)	0.050	0.125	0.250	0.375	0.500	0.625	0.750	1.000		
Continuous 100%	100 [27.8]	48 [13.3]	15 [4.2]	8 [2.2]	4 [1.1]	2 [0.6]	1 [0.3]	N/A	155 [43.1]	8.5
Intermittent 25%	135 [37.5]	93 [25.9]	70 [19.5]	32 [8.9]	20 [5.6]	15 [4.2]	12 [3.3]	10 [2.8]	191 [53.1]	26.5
Intermittent 10% <sup>3</sup>	175 [48.7]	145 [40.3]	110 [30.6]	80 [22.2]	60 [16.7]	48 [13.3]	25 [7]	11 [3.1]	200 [55.6]	72.2
Pulse 1% <sup>3</sup>	235 [65.3]	210 [58.4]	175 [48.7]	140 [38.9]	120 [33.4]	80 [22.2]	50 [13.9]	12 [3.3]	N/A	146.8

Continuous Duty 100% = 100% On Time

Intermittent Duty 25% = 25% On Time (100 Seconds On Max Followed By 300 Seconds Off)

Intermittent Duty 10% = 90% On Time (10 Seconds On Max Followed By 90 Seconds Off)

Pulse Duty 1% = 99% On Time (1 Second On Max Followed By 99 Seconds Off)

<sup>3</sup> - Calculated force values to be verified in application



www.Kelcoind.com

Information contained in this specification sheet subject to change without notice. Guardian Electric ©

